

USER MANUAL

Open-Ear Headphones

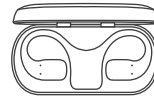
RY-AC01



WHAT'S INCLUDED



Open-Ear Headphones*1



Charging Case*1

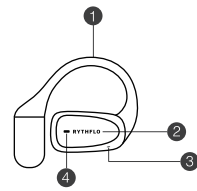


Manual*1

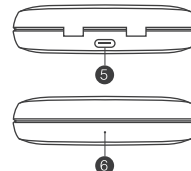


Type-C Charging Cable*1

PRODUCT DIAGRAM



- 1 Earhook
- 2 Touch-control Area
- 3 Microphone
- 4 Earphone Indicator



- 5 Type-C Charging Port
- 6 Charging Case Indicator

OPERATION

Function	Operation
Power On	Tap and hold for 3s
Power Off	Tap and hold for 5s
Play/Pause	Tap twice
Activate/Deactivate Voice Assistant	Tap three times
Answer/Hang up Call	Tap twice
Reject Call	Tap and hold for 2s when call comes in
Volume Up	Tap right earphone once
Volume Down	Tap left earphone once
Previous Track	Tap and hold left earphone for 1.5s
Next Track	Tap and hold right earphone for 1.5s
Reset	Tap and hold left and right earphones for 8s

INDICATORS

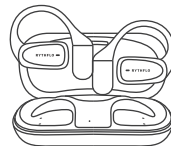
Status	Indicator	Display
Power On	Blue	Flashes once
Power Off	Red	Flashes once
Charging		Solid
Low Battery		Flashes once every 5s
Fully Charged		Off
Pairing	Red & Blue	Flashing alternately
Reset		Flashing 3 times
Charging Case Power	Red (30%)	On for 30s
	Orange (30%-70%)	
	Green (70%)	

SPECIFICATION

Product Material	ABS + PC + Silicone Rubber
Bluetooth Version	V5.4
Working Range	≤ 18m
Battery Capacity	55mAh*2+400mAh
Rated Input	5V 500mA
Charging Time	< 1.5H
Play Time	8H (50%Volume)
Protection Grade	IPX7 (Earphones Only)

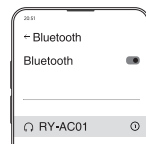
HOW TO CONNECT

Step 1: Take out the earphones from charging case into pairing mode, the earphones indicator flashes red and blue alternately.

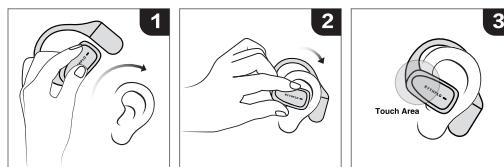


* When powered on, RY-AC01 will automatically connect with the last paired device.
* The pairing state will exit if pairing lasts longer than 5mins or pairing fails.

Step 2: Select "RY-AC01" from your Bluetooth list and connect, the earphones' indicator turn off when connected.



HOW TO WEAR



RESET

If the earphones automatically connected back to the previous device when you want to connect other device:

Step 1: Turn off earphones.



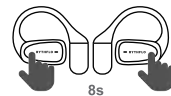
Put the earphones back to the charging case

or



Tap and hold any of the earphone for 5s

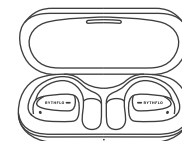
Step 2: Tap and hold both earphones for 8s and into pairing mode.



HOW TO CHARGE

Charge Earphones:

Put the earphones in the charging case.

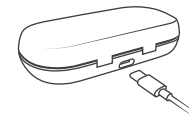


Low battery: Red light flashes every 5s
Charging: Red light solid
Fully charged: Light off

Charge Case:

Charge the case by Type-C cable.

1%-30%: Red light flashes
31%-70%: Orange light flashes
71%-99%: Green light flashes
Fully charged: Green light solid



MANUFACTURER

Shenzhen Hanke Technology Co.,Ltd
Room 601, No.1 Lane, Wuhe Community, Bantian Street, Longgang District, Shenzhen, Guangdong, China, 518000

FCC COMPLIANCE

This device complies with Part 15 of the FCC Rules. Operation is subject to the following two conditions: (1) this device may not cause harmful interference, and (2) this device must accept any interference received, including interference that may cause undesired operation.

Changes or modifications to this unit not expressly approved by the party responsible for compliance could void the user's authority to operate the equipment.

NOTE: This equipment has been tested and found to comply with the limits for a Class B digital device, pursuant to Part 15 of the FCC Rules. These limits are designed to provide reasonable protection against harmful interference in a residential installation. This equipment generates uses and can radiate radio frequency energy and, if not installed and used in accordance with the instructions, may cause harmful interference to radio communications. However, there is no guarantee that interference will not occur in a particular installation. If this equipment does cause harmful interference to radio or television reception, which can be determined by turning the equipment off and on, the user is encouraged to try to correct the interference by one or more of the following measures:

- Reorient or relocate the receiving antenna.
- Increase the separation between the equipment and receiver.
- Connect the equipment into an outlet on a circuit different from that to which the receiver is connected.
- Consult the dealer or an experienced radio/TV technician for help.

This device and its antenna(s) must not be co-located or operation in conjunction with any other antenna or transmitter.

Radiation Exposure Statement
The device has been evaluated to meet general RF exposure requirement in portable exposure condition without restriction.



Made in China

WARRANTY&SERVICE

This product is covered with Rythflo product and labor warranty for 12 months from the date of its original purchase. Any concerns please email us as soon as possible, Rythflo will help you within 24 hours.

support@rythflo.com



RYTHFLO