

# WIRELESS MICROPHONE

RY-LM02



**USER MANUAL**

# PRODUCT INTRODUCTION

Dear user, thank you for choosing to use our wireless lavalier microphone. This manual will provide you with clear usage guidelines to help you quickly get started and fully utilize the product's functions. It can provide professional level recording and live streaming output, plug and play, and can be used for online live streaming, video VLOG shooting, program interviews, interview recording, video teaching and other scenarios.



Charging case



Transmitter



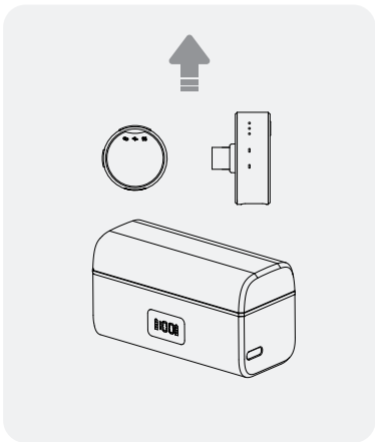
Receiver



Charging cable

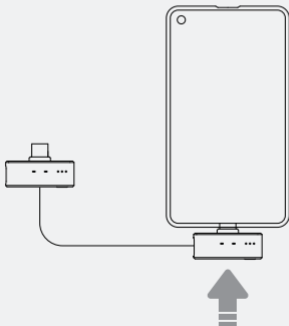
# USAGE METHOD

1. Remove the transmitter and receiver



## USAGE METHOD

2. Insert the receiver into the phone (the transmitter and receiver indicator light remain on for use).



## TRANSMITTER BUTTON



### Multiple use button

On/Off -

Long press and hold the multifunction button

Noise reduction -

click on the multifunction button

Reverb -

Double click on the multifunction button

Mute -

Three click multifunction button

# TRANSMITTER INDICATOR LIGHT



## Indicator light:

- Blue light flashing - pairing
- Blue light solid on - paired
- Long green light on - charging
- Green light off - fully charged
- Red light flashing - low battery
- Red light always on - mute

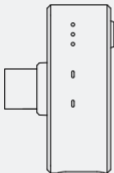


Long blue light on -  
noise reduction on



Long blue light on -  
Reverb on

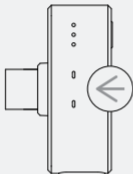
# RECEIVER BUTTON



## **Volume button:**

Click the volume button to increase or reduce volume (cycle in sequence)

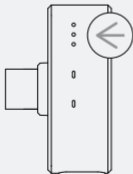
## RECEIVER INDICATOR LIGHT



### Paired indicator light

Blue light solid on - paired

Blue light flashing - pairing



### Microphone volume indicator light

first gear     •

second gear   • •


third gear    • • •

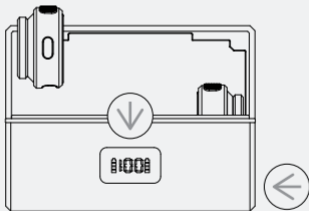


# CHARGING CASE

## Digital display screen

 Transmitter charging indicator

 Charging case power indicator

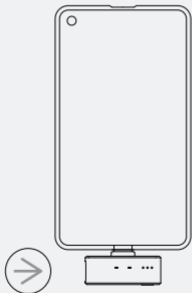


Charging port

## PHONE CHARGING

When shooting short videos or live broadcasts

The phone can be charged through the interface on the receiver.



**Charging port**

## FREQUENTLY ASKED QUESTION

### 1. Why can't I record normally after connecting to my phone?

\*Please check if the connection indicator lights of the microphone transmitter and receiver are always on.

\*Please check if the microphone transmitter battery is sufficient. If the battery is low, please charge it promptly.

\*Some Xiaomi and Huawei phones need to update their phone versions (Settings > My Device > Version > Check for updates).

\*Some brands of mobile phones, such as VIVO, OPPO, Realme, Oneplus, igoo, etc., require the OTG function to be turned on and external recording devices to be turned on

**Step 1:** Open the "OTG" process: Phone settings > Other settings > OTG > Open or search for "OTG" in the search box in the settings and open it)

**Step 2:** Open the external device process: Settings > Sound and Vibration > More Sound Settings > Default Recording Device > External Device

### 2. Can't the microphone transmitter record for the camera app that comes with the device?

\*Some brands of mobile phones have strict restrictions on the system, which prevent the microphone transmitter from obtaining audio permissions, not due to the quality of the microphone. If this situation occurs, please contact the brand phone manufacturer.

\*This product is compatible with the vast majority of apps on the market. Please try using other apps instead.

### 3. Is there noise in the recorded sound?

\*Check if the microphone transmitter is in noise reduction mode (the second indicator light is always on). Click the multifunction button to turn on noise reduction.

## FREQUENTLY ASKED QUESTION

### **4. Is the recorded sound too low?**

\*Please shorten the distance between the microphone transmitter and the sound source reasonably to avoid breaking the sound.

\*Please click the microphone transmitter volume button on the receiver to increase the volume.

\*Some brands of mobile phones, such as VIVO, OPPO, Realme, Oneplus, iqoo, etc., require the "OTG" function to be turned on and external recording devices to be turned on (please follow the first step of the FAQ).

### **5. What should I do if there is wind noise?**

\*If you purchased a model equipped with a windshield, please install the windshield on the microphone transmitter.

### **6. What should I do if the connected phone has low battery during recording?**

\*Please connect the charging cable to the charging port on the receiver to charge the phone.

### **7. What if there is an echo?**

\*Check if the microphone transmitter has the reverb function turned on (the third indicator light is on). Double click the multifunction button to turn off reverb.

\*Enter the song request interface in the live broadcast room and set it to the original sound in the tuning section.

### **8. What if there is an echo during the live broadcast?**

\*Please turn off the sound on your phone while watching the live broadcast, otherwise there will be echoes (phones in the same space cannot have sound while watching the live broadcast).

# PRODUCT PARAMETERS

Wireless transmission: 2.4GHz

Sound delay: <20ms

Frequency response: 20Hz-20KHz

Sensitivity: -35dB

Signal to noise ratio: -65dB

Transmission distance: 65ft (turning) -131ft (visible)

Transmitter: 360° omnidirectional

Battery life: Microphone transmitter: >6H

Paired with charging case: >23H

Battery capacity: Microphone transmitter: 70mAh

Charging case: 400mAh

Input voltage: DC4.5-5.2V

Adapter: 5V/1A

Weight: Microphone transmitter: 9g

Receiver: 4g

Charging case: 64g

Size: Microphone transmitter: 24\*10.3mm

Receiver: 34.5\*13\*8.2mm

Charging case: 74\*32.7\*41mm

# SAFETY PRECAUTIONS

1. The product contains strong magnetism. To avoid magnetization effects, please stay away from easily interfering devices such as magnetic cards, IC cards, implanted medical devices (such as pacemakers), hard drives, RAM chips, etc.
2. It is strictly prohibited to let the product come into contact with any liquid, and do not immerse the product in water or wet it. Do not use the product in rain or damp environments. After contact with water inside the product, corrosion reactions may occur, leading to battery self ignition or even explosion.
3. If the product catches fire, please immediately use water, water mist, sand, fire blanket powder, and carbon dioxide fire extinguishers to extinguish the fire. Please choose the fire extinguishing method in the order recommended above based on the actual situation.
4. Please use the product in an environment between  $-10^{\circ}\text{C}$  and  $45^{\circ}\text{C}$ , with a charging environment temperature of  $5^{\circ}\text{C}$  to  $45^{\circ}\text{C}$ .
5. It is prohibited to disassemble the product in any way. If the battery is punctured during disassembly, it will lead to electrolyte leakage inside the battery, and even cause a fire or explosion.
6. Mechanical impact, rolling or throwing of products is prohibited. Do not place heavy objects on the product.
7. Do not place the product in the accessories or inside of heating equipment, cooking equipment, high-pressure containers, etc. (such as microwaves, battery ovens, electric ovens, electric heaters, high-pressure cookers, water heaters, gas stoves, etc.) to prevent the battery from overheating and exploding.

## SAFETY PRECAUTIONS

8. It is prohibited to place products near heat sources (such as stoves or heaters) or in cars on hot days. Do not store the product in an environment exceeding 60°C.
9. Do not store the battery for a long time after fully discharging it, to avoid damage to the battery cell caused by excessive discharge, and it will not be able to be used again.
10. The charging compartment, data cable, and battery of the original matching model must be used.
11. Using non certified or non matching charging compartment data cables or batteries may cause electric shock, fire, explosion, or other hazards.

### Attention:

Due to product version upgrades or other reasons, this manual may be updated from time to time.

Unless otherwise agreed, this document is only intended as a guide for use. All statements, information, and suggestions in this document do not constitute any express or implied warranties.

## WARRANTY & SERVICE

This product is covered with Rythflo product and labor warranty for 12 months from the date of its original purchase.

Any questions welcome to contact us:

**support@rythflo.com**

## FCC COMPLIANCE

This device complies with Part 15 of the FCC Rules.

Operation is subject to the following two conditions:

- (1) This device may not cause harmful interference.
- (2) This device must withstand any interference received, including interference that may cause undesired operation.

## MANUFACTURER

Shenzhen Hanke Technology Co.,Ltd

Meipeng SKY311, No.3 Hebei Industrial Zone, Zhongxing Road, Ma'antang Community, Bantian Street, Longgang District, Shenzhen, Guangdong, China, 518000

